

abbotFox

ALBION  
MILL

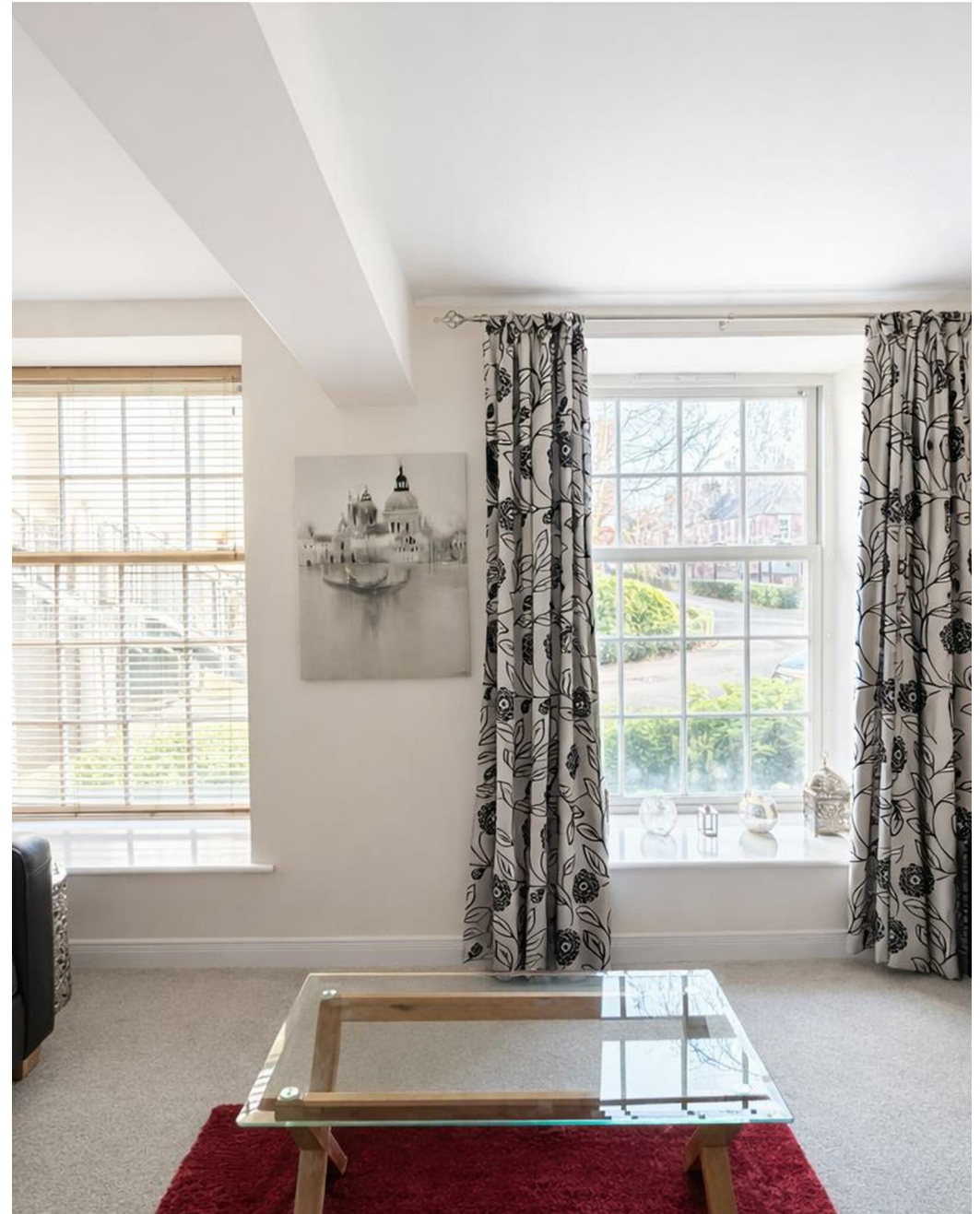


King Street, Norwich  
Guide Price £155,000

“

We are a team of genuine individuals who hold a deep passion for both property and marketing. Collectively, we bring over 70 years of experience in the property market of Norfolk and Suffolk. Our affection for both counties runs deep, and we are enthusiastic about sharing our passion with you.

Colin McKenzie | **Branch Partner**







## THE DETAIL \_\_\_\_\_

abbotFox presents this spacious, ground floor apartment. Set within the popular Albion Mill development, this home represents an excellent opportunity for any buyer looking to enjoy the convenience of City Living or for those looking for a ready made investment opportunity.

Albion Mill is conveniently set within easy reach of Norwich City Centre, the train station, Riverside development and a variety of independent businesses, which allows for an exceptional degree of convenience.

The property itself offers neatly arranged accommodation comprising; entrance hall, open plan living space with well equipped kitchen area. Generous double bedroom and a family bathroom. An internal viewing comes highly recommended

Guide price £155,000 - £165,000



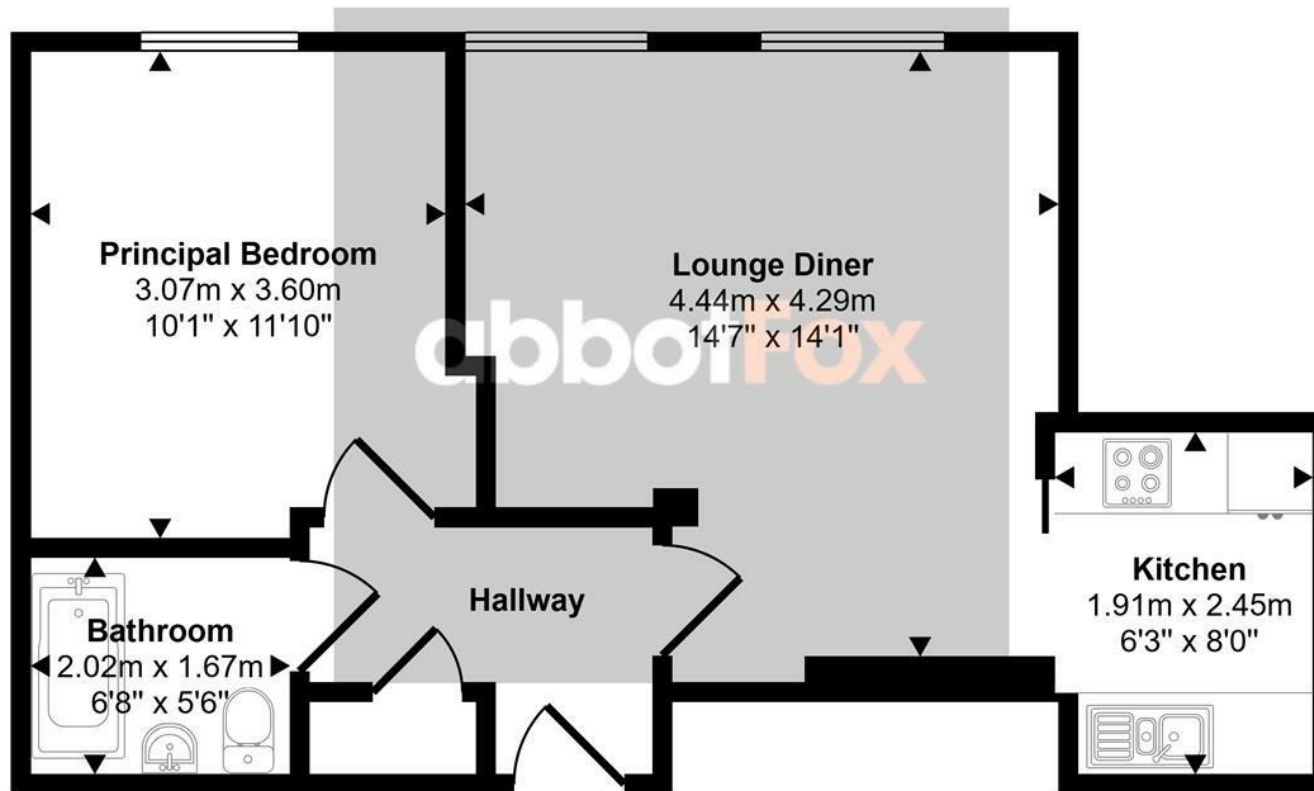




## THE HIGHLIGHTS \_\_\_\_\_

- Ground floor apartment
- One bedroom
- Generous living accommodation
- Convenient location
- Viewing advised
- Chain free
- Currently LET achieving £975 PCM

Approx Gross Internal Area  
44 sq m / 474 sq ft



Floorplan

This floorplan is only for illustrative purposes and is not to scale. Measurements of rooms, doors, windows, and any items are approximate and no responsibility is taken for any error, omission or mis-statement. Icons of items such as bathroom suites are representations only and may not look like the real items. Made with Made Snappy 360.

*Let's talk*

01603 660000

[sales@abbotfox.co.uk](mailto:sales@abbotfox.co.uk)

@abbotfox

EPC RATING - C

Disclaimer – In accordance with the Property Misdescriptions Act, the company abbotFox gives notice that all descriptions, references to condition, necessary permissions for use and other details are given in good faith and believed to be correct, but any purchaser should not rely on them as statements of fact, and must satisfy themselves by inspection or other means, as to their accuracy.